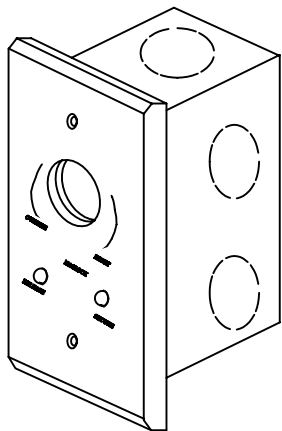
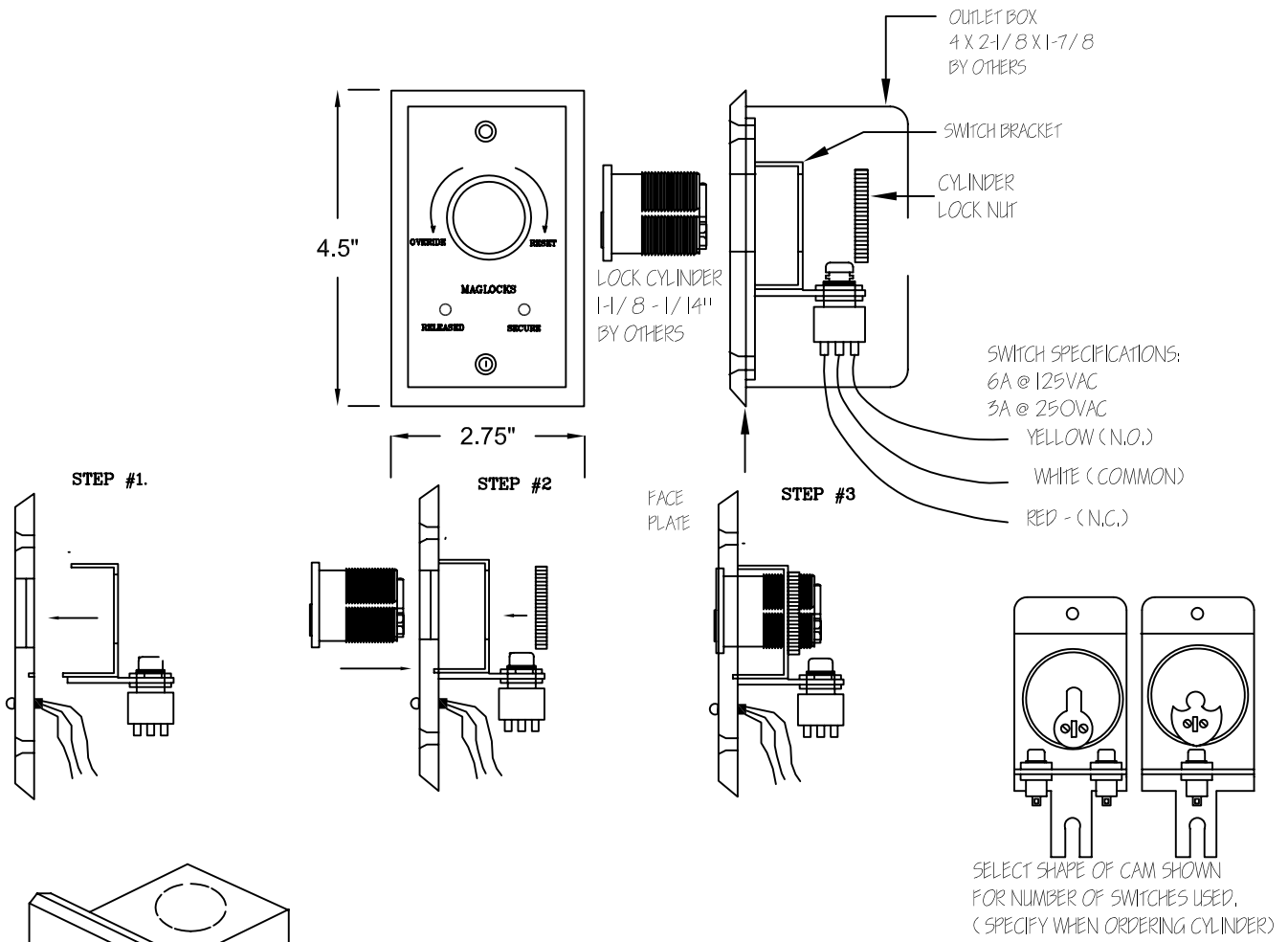


KEYSWITCH KS950 SERIES (ALUMINUM)



**KS950SP SERIES
1/4" ALUM.
FACEPLATE**

- MODEL NO.: A SERIES (ALUM FACE PLATE)
- KS951A - ALTERNATE ACTION (SPDT)
 - KS952A - MOMENTARY ACTION (SPDT)
 - KS9511A - TWO SPDT ALTERNATE ACTION
 - KS9522A - TWO SPDT MOMENTARY ACTION
 - KS9521A - ONE SPDT ALTERNATE/
ONE SPDT MOMENTARY ACTION.

- OPTIONS
- LG - GREEN LED,
 - LR - RED LED,
 - LGR - ONE GREEN & ONE RED LED,
 - SUFFIX "D" - FOR DPDT SWITCHES

"SSR" SILKSCREEN



ASTERISK SECURITY
HARDWARE INTERNATIONAL INC.
7045 Transmere Drive
Unit 10
Mississauga, Ontario
Canada L5S 1M2

**ASTERISK SECURITY HARDWARE INT'NL INC
KEYSWITCH-KS950A**